

1614 AWG Vinyl Insulated Flanged Spade with Copper Support Sleeve

Material: Tin Plated Copper with Butted Seam

Insulation Material: Blue PVC Vinyl with Funnel Entry Copper Support Sleeve

Maximum Electrical Current: 30 Amps

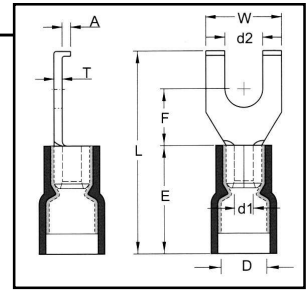
Barrel ID (d1): .091

Maximum Electrical Rating: 75°C, 600V

Barrel OD (D): .197 **J Type:** .185

Material Thickness (T): .031

Barrel Length (E): .413 **J Type:** .378



HOFFMAN PART NO.	STUD SIZE	DIMENSIONS (INCHES)					UL	TAPE MOUNTED REEL QTY	DIE FOR TAPE MOUNTED	HAND TOOL
		STUD DIAMETER	TONGUE WIDTH	STUD CLEARANCE	LENGTH	FLANGE HEIGHT				
		d2	W	F	L	A				
FVD1614S3B	6	0.146	0.335	0.283	0.925	0.059	Y	1000	3V1614	YNM2210D
FVD1614S3B/J	6	0.146	0.335	0.283	0.772	0.059	Y	1000	3V1614	YNT1614
FVD1614S4B	8	0.169	0.335	0.283	0.925	0.059	Y	1000	3V1614	YNM2210D
FVD1614S4B/J	8	0.169	0.335	0.283	0.772	0.059	Y	1000	3V1614	YNT1614
FVD1614S5B	10	0.209	0.335	0.283	0.925	0.059	Y	1000	3V1614	YNM2210D
FVD1614S5B/J	10	0.209	0.335	0.283	0.772	0.059	Y	1000	3V1614	YNT1614

1210 AWG Vinyl Insulated Flanged Spade with Copper Support Sleeve

Material: Tin Plated Copper with Butted Seam

Insulation Material: Yellow PVC Vinyl with Funnel Entry Copper Support Sleeve

Maximum Electrical Current: 50 Amps

Barrel ID (d1): .134

Maximum Electrical Rating: 75°C, 600V

Barrel OD (D): .268 **J Type:** .256

Material Thickness (T): .039

Barrel Length (E): .531 **J Type:** .551

HOFFMAN PART NO.	STUD SIZE	DIMENSIONS (INCHES)					UL	TAPE MOUNTED REEL QTY	DIE FOR TAPE MOUNTED	HAND TOOL
		STUD DIAMETER	TONGUE WIDTH	STUD CLEARANCE	LENGTH	FLANGE HEIGHT				
		d2	W	F	L	A				
FVD1210S3B	6	0.146	0.299	0.244	1.024	0.059	Y	1000	3V1210	YNM2210D
FVD1210S3B/J	6	0.146	0.299	0.244	0.992	0.059	Y	1000	3V1210	YNT1210S
FVD1210S4B	8	0.169	0.299	0.244	1.024	0.059	Y	1000	3V1210	YNM2210D
FVD1210S4B/J	8	0.169	0.299	0.244	0.992	0.059	Y	1000	3V1210	YNT1210S
FVD1210S5B	10	0.209	0.335	0.295	1.083	0.059	Y	1000	3V1210	YNM2210D
FVD1210S5B/J	10	0.209	0.299	0.244	0.992	0.059	Y	1000	3V1210	YNT1210S

